
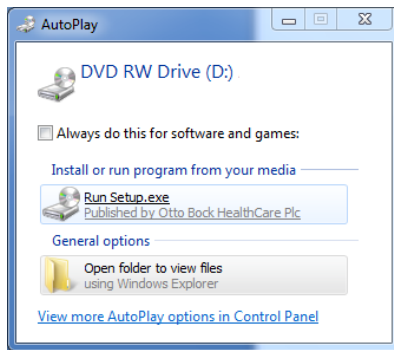


Installing Ottobock 60X5/60X1 Drivers from CD

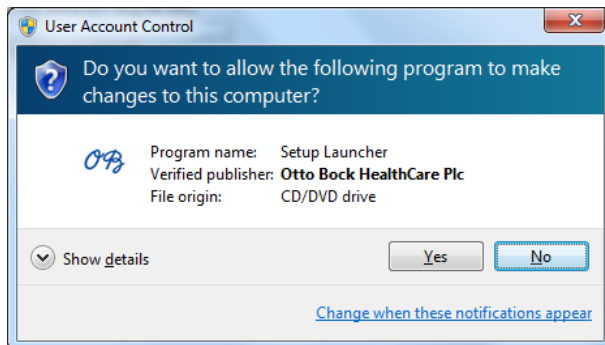
This guide can be used when installing 60X5/60X1 drivers on Windows 7 or Windows XP.

Windows 7

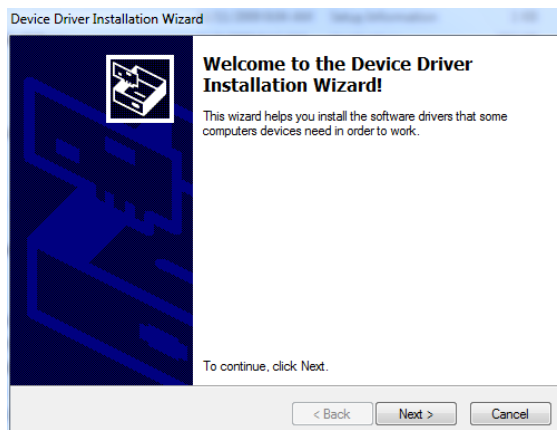
- Plug the 60X5/60X1 adapter into the computer
- Insert the 2.0 driver CD into the CD-ROM drive.
- The CD may or may not Autoplay. If the CD Autoplays, click on Run Setup.exe to start the installation. If the CD doesn't Autoplay, click the start menu  and then click Computer. Double click the CD drive in Computer to start the installation.



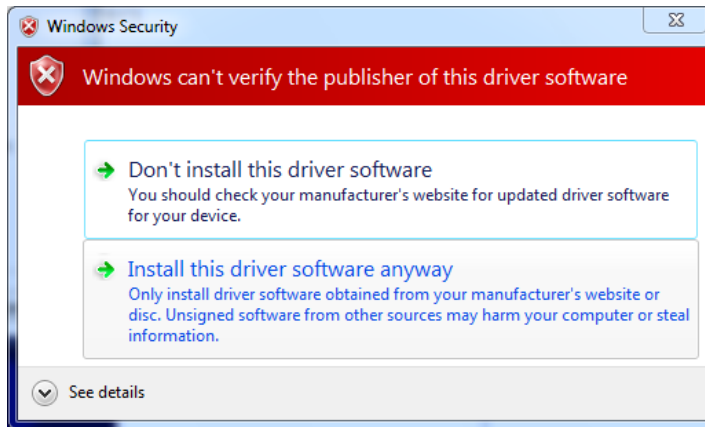
- Click **Yes** if prompted with the following message.



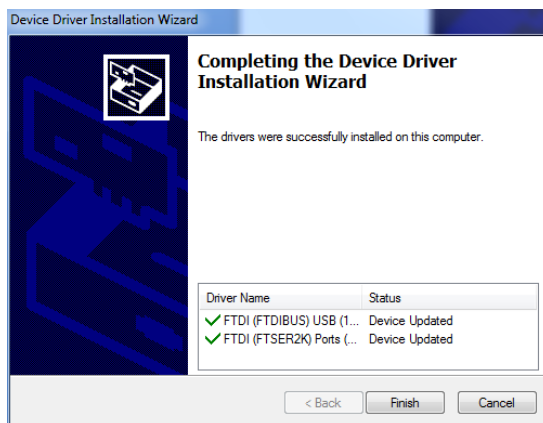
- When the **Welcome to Device Driver Installation Wizard** opens, click Next.



- During the installation you may be prompted several times with a security message similar to the following screenshot. If you are prompted with this message, click **Install this driver software anyway**.



- Click Finish. The 60X5/60X1 drivers are installed.



Windows XP

- Plug the 60X5/60X1 adapter into the computer

If the Welcome to the Found new Hardware Wizard opens automatically, follow these steps.

- Click **No, not this time** if prompted to connect to Windows Update and click **Next**.



- Insert the 2.0 driver CD into the CD-ROM drive.
- Select **Install the software automatically** and click **Next**.





- Click **Continue Anyway** if prompted with the following message.



- Click finish. **If the wizard opens again, repeat the above process.**

If the Welcome to the Found new Hardware Wizard doesn't open, follow these steps.

- Click the  menu and then click My Computer. Right click the CD drive and select Open. Double click the  `DPIInst.exe` file to begin the installation.
- When the **Welcome to Device Driver Installation Wizard** opens, click Next.
- During the installation you may be prompted several times with a security message similar to the following screenshot. If you are prompted with this message, click **Continue Anyway**.



- Click Finish. The 60X5/60X1 drivers are installed.