



## Connecting Genium to X-Soft

Genium is **only** compatible with the Ottobock 60X5 Bluetooth adapter. Genium is not compatible with the ANYCOM Bluetooth adapter, 3<sup>rd</sup> party external Bluetooth adapters, or internal Bluetooth.

To connect the Genium to your computer you will first need to install X-Soft and 60X5 Bluetooth drivers. Instructions for installing X-Soft can be found in the Genium Instructions for Use on <http://academy.ottobockus.com>. Instructions for installing the 60X5 Bluetooth drivers can also be found on <http://academy.ottobockus.com>.

## Establishing connection between X-Soft and the Genium

Note: Make sure the Genium is charged before proceeding with the following steps.

### Step 1 – Plug the 60X5 Bluetooth adapter into the computer

Plug the Ottobock 60X5 Bluetooth adapter into a USB port on the computer. If you are plugging the 60X5 adapter into the computer for the first time, the driver software for the cable will need to be installed. To install the drivers, follow the instructions in the 60X5 manual or visit <http://academy.ottobockus.com/> to download the drivers.

### Step 2 – Open Otto Bock Data Station 5

Click the Otto Bock Data Station 5 icon on your desktop.

### Step 3 –Select an existing patient or add a new patient

Highlight (left click) an existing patient or click the 'New patient' button to add a new patient.

### Step 4 – Start X-Soft

Click the 'New job' tab and click X-Soft under the 'Prosthetic Lower Extremity' tab.



### Step 5 – Enter your X-Soft Username and Password

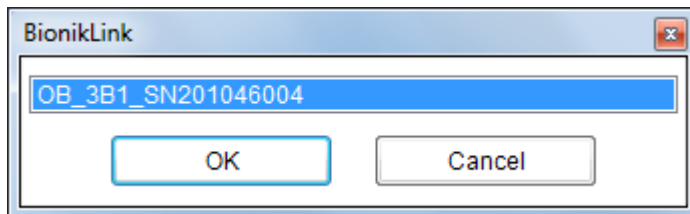
Your Username is typically your first name space last name (e.g., Joe Smith). If you are unsure of your username or password, contact Ottobock at 800-328-4058.

### INFORMATION

The Ottobock password is case sensitive. After entering the Ottobock password you will be prompted to create a new password. The new password must be a minimum of 6 characters and you will need to enter the new password twice.

### Step 6 – Establish connection

Click the 'Connect' button. If several Genium knees are in range, the serial numbers will be displayed in a pop-up window. The serial number is found on the right inside of the knee joint frame when looking at the hydraulics. Select the desired knee joint and click the OK button.



### Step 7 – Programming the Genium

For additional instructions on programming the Genium see the Instructions for Use manual on <http://academy.ottobockus.com>.